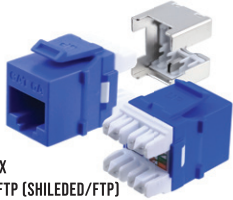


# ONE MANUFACTURER. MANY SOLUTIONS.

## WORK AREA OUTLETS

### CAT6A KEYSTONE JACKS - HDJ SERIES [SINGLE PACK]

WH  
BL



- PART NO. HD-6AKSJXX
- PART NO. HD-6AKSJ-FTP (SHIELED/FTP)
- 110-TYPE, 8P8C, RJ-45, T568A/B WIRING
- 180-Degree configuration for fast punch down
- Component-Rated performance

### CAT6A KEYSTONE JACKS - HDJ SERIES [25-PACK]

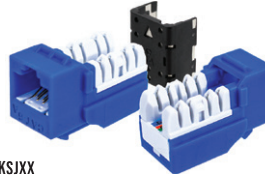
WH  
BL  
YL  
BK



- PART NO. HD-6AKSJXX-25PK
- 110-TYPE, 8P8C, RJ-45, T568A/B WIRING
- 180-Degree configuration for fast punch down
- Component-Rated performance

### CAT6A KEYSTONE JACKS - SDJ SERIES [SINGLE PACK]

WH  
BL



- PART NO. 6AKSJXX
- 110-TYPE, 8P8C, RJ-45, T568A/B WIRING
- 90-Degree configuration for fast punch down
- Component-Rated performance

### CAT6A KEYSTONE JACKS - SDJ SERIES [25-PACK]

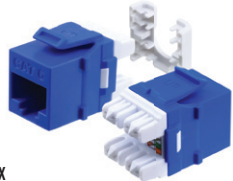
WH  
BL  
YL  
BK



- PART NO. 6AKSJXX-25PK
- 110-TYPE, 8P8C, RJ-45, T568A/B WIRING
- 90-Degree configuration for fast punch down
- Component-Rated performance

### CAT6 KEYSTONE JACKS - HDJ SERIES [SINGLE PACK]

WH RD  
BL OR  
IV YL  
GN BK  
LA



- PART NO. HD-6EKSJXX
- 110-TYPE, 8P8C, RJ-45, T568A/B WIRING
- 180-Degree configuration for fast punch down
- Component-Rated performance

### CAT6 KEYSTONE JACKS - HDJ SERIES [25-PACK / 50-PACK]

WH YL  
BL BK



- PART NO. HD-6EKSJXX-25PK
- PART NO. HD-6EKSJXX-50PK (WH / BL)
- 110-TYPE, 8P8C, RJ-45, T568A/B WIRING
- 180-Degree configuration for fast punch down
- Component-Rated performance

### CAT6 KEYSTONE JACKS - SDJ SERIES [SINGLE PACK]

WH RD  
BL OR  
IV YL  
GN BK  
LA PR



- PART NO. 6EKSJXX
- 110-TYPE, 8P8C, RJ-45, T568A/B WIRING
- 90-Degree configuration for fast punch down
- Component-Rated performance

### CAT6 KEYSTONE JACKS - SDJ SERIES [25-PACK / 50-PACK]

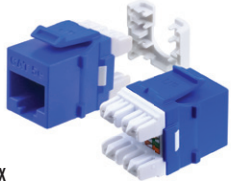
WH YL  
BL BK



- PART NO. 6EKSJXX-25PK
- PART NO. 6EKSJXX-50PK (WH / BL)
- 110-TYPE, 8P8C, RJ-45, T568A/B WIRING
- 90-Degree configuration for fast punch down
- Component-Rated performance

### CAT5E KEYSTONE JACKS - HDJ SERIES [SINGLE PACK]

WH RD  
BL OR  
IV YL  
GN BK  
LA



- PART NO. HD-5EKSJXX
- 110-TYPE, 8P8C, RJ-45, T568A/B WIRING
- 180-Degree configuration for fast punch down
- Component-Rated performance

### CAT5E KEYSTONE JACKS - HDJ SERIES [25-PACK]

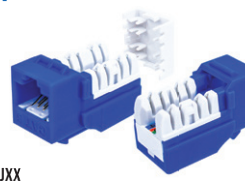
WH  
BL  
YL  
BK



- PART NO. HD-5EKSJXX-25PK
- 110-TYPE, 8P8C, RJ-45, T568A/B WIRING
- 180-Degree configuration for fast punch down
- Component-Rated performance

### CAT5E KEYSTONE JACKS - SDJ SERIES [SINGLE PACK]

WH RD  
BL OR  
IV YL  
GN BK  
LA



- PART NO. 5EKSJXX
- 110-TYPE, 8P8C, RJ-45, T568A/B WIRING
- 90-Degree configuration for fast punch down
- Component-Rated performance

### CAT5E KEYSTONE JACKS - SDJ SERIES [25-PACK]

WH  
BL  
YL  
BK



- PART NO. 5EKSJXX-25PK
- 110-TYPE, 8P8C, RJ-45, T568A/B WIRING
- 90-Degree configuration for fast punch down
- Component-Rated performance

### CAT3 KEYSTONE JACKS - SDJ SERIES [SINGLE PACK]

WH  
IV  
LA



- PART NO. 3EKSJXX
- 110-TYPE, 6P6C, RJ-11/RJ-12, USOC/UTP
- 90-Degree configuration for fast punch down
- Designed for voice applications

### HDMI KEYSTONE STYLE FEEDTHROUGH COUPLERS



- PART NO. WHDMI-WH
- HDMI-TO-HDMI keystone style feedthrough
- Accepts standard keystone port openings
- Ideal for coupling multiple HDMI cables

### CAT6 KEYSTONE STYLE FEEDTHROUGH COUPLERS [SINGLE PACK]

WH  
BK



- PART NO. 6KSCXX1
- Snap-In, Keystone style, RJ-45
- Accepts standard keystone port openings
- Component-Rated performance

### CAT6 KEYSTONE STYLE FEEDTHROUGH COUPLERS [25-PACK]

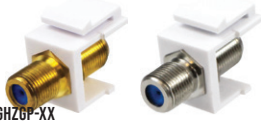
WH  
BK



- PART NO. 6KSCXX25
- Snap-In, Keystone style, RJ-45
- Accepts standard keystone port openings
- Component-Rated performance

### SNAP-IN F-TYPE GOLD & NICKEL PLATED 3GHZ F/F KEYSTONE INSERT MODULES [SINGLE PACK]

WH  
IV



- PART NO. FTK-3GHZGP-XX
- PART NO. FTK-3GHZNP-XX
- Snap-in keystone style compatible with faceplates, blank patch panels and surface mount boxes
- 3GHZ gold-plated and nickel plated ideal for CATV, SATV, Antennas and other video applications

### SNAP-IN F-TYPE GOLD & NICKEL PLATED 3GHZ F/F KEYSTONE INSERT MODULES [25-PACK]

WH  
IV



- PART NO. FTK-3GHZGP-XX-25PK
- PART NO. FTK-3GHZNP-XX-25PK
- Snap-in keystone style compatible with faceplates, blank patch panels and surface mount boxes
- 3GHZ gold-plated and nickel plated ideal for CATV, SATV, Antennas and other video applications

### GOLD-PLATED SPEAKERS BINDING POST MODULES

WH  
IV



- PART NO. KSBP-BRPAIR-XX
- Ideal for banana plugs, speaker tips, spade tips or bare wire
- Compatible with faceplates, blank patch panels and SMBs
- Packaged in pair red & black color code

### BNC 75 OHM KEYSTONE STYLE MODULES

WH  
IV



- PART NO. KSBNC75-XX
- Compatible with faceplates, blank patch panels and SMBs
- Female-female BNC feedthrough connector
- 75 Ohm impedance, nickel-plated finish

# WORK AREA OUTLETS

## FLUSH MOUNTING STYLE WITHOUT ID WINDOWS FACEPLATES

WH  
IV  
LA



- PART NO. FPO1PXX
- PART NO. FPO2PXX
- PART NO. FPO3PXX
- PART NO. FPO4PXX
- PART NO. FPO6PXX

- PART NO. FPO1PXX-25PK
- PART NO. FPO2PXX-25PK
- PART NO. FPO3PXX-25PK
- PART NO. FPO4PXX-25PK
- PART NO. FPO6PXX-25PK

- PART NO. FPO0PXX
- PART NO. FPO0DGXX
- PART NO. FPO0BXX

- Single & double gang
- Flush mount design for professional aesthetic look
- Matte finish with rugged and durable construction



## FLUSH MOUNTING STYLE WITH ID WINDOWS FACEPLATES

WH  
IV



- PART NO. FPW1PXX
- PART NO. FPW2PXX
- PART NO. FPW3PXX
- PART NO. FPW4PXX
- PART NO. FPW6PXX

- PART NO. FPW1PXX-25PK
- PART NO. FPW2PXX-25PK
- PART NO. FPW3PXX-25PK
- PART NO. FPW4PXX-25PK
- PART NO. FPW6PXX-25PK

- ID windows with enclosed labels and clear plastic covers
- 1-6 Ports with color-matched screws
- Single-gang accepts standard metal or plastic outlet boxes
- Matte finish with rugged and durable construction
- Fits standard rectangular NEMA openings



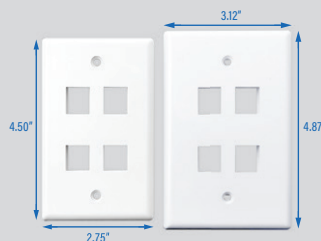
## FLUSH MOUNTING STYLE OVERSIZED FACEPLATES

WH  
IV



- PART NO. OSWP01XX
- PART NO. OSWP02XX
- PART NO. OSWP03XX
- PART NO. OSWP04XX
- PART NO. OSWP06XX

- 1-6 Port with color-matched screws
- Offers greater coverage to hide wall irregularities
- Flush mount design for professional aesthetic look
- Glossy finish with rugged and durable construction
- Fits standard rectangular NEMA openings



STANDARD SIZE      OVERSIZED

## FLUSH MOUNTING STYLE STAINLESS STEEL FACEPLATES

SS



- PART NO. SSFP-01P
- PART NO. SSFP-02P
- PART NO. SSFP-03P
- PART NO. SSFP-04P
- PART NO. SSFP-06P
- PART NO. SSFP-06P-D
- PART NO. SSFP-012P-D

- Brushed stainless steel finish to provide corrosion resistant
- Suitable for durability and sanitary environment requirements
- Ideal for residential and commercial applications
- Flush mounting style for seamless aesthetic look

Double-Gang

## DECORA STYLE MULTIMEDIA INSERTS AND WALLPLATES

WH  
IV



- PART NO. DWIN-1P-XX
- PART NO. DWIN-2P-XX
- PART NO. DWIN-3P-XX
- PART NO. DWIN-4P-XX
- PART NO. DWIN-6P-XX

- PART NO. DWIN-BR-WH
- PART NO. DWPBI-XX
- PART NO. DWP1G-XX
- PART NO. DWP2G-XX

- Supports keystone Inserts, with many combination capabilities
- Fits Decora style single-gang and double-gang faceplates
- Contemporary style ideal for residential or commercial installations
- Glossy finish with rugged and durable construction

## SURFACE MOUNTING BOXES

WH  
IV



- PART NO. SMB-1XX
- PART NO. SMB-2XX
- PART NO. SMB-4XX
- PART NO. SMB-6XX

- 1/2"/4/6-Port, Unloaded, Configurable
- Suitable for surface mounting applications
- Compatible with modular keystone connectors
- Includes two self-tapping screws and double-sided adhesive tape

## RECESSED TELEPHONE WALLPLATES PLASTIC & STAINLESS STEEL

WH  
SS



- PART NO. WPP01WH
- PART NO. WPP01SS

- Designed to wall mount telephone on wall
- Compatible with universal modular keystone jacks
- Rivet feature support variety of wall mount telephones

## FLUSH MOUNTING STYLE INTEGRATED FACEPLATE CAT6 DATA & F-TYPE PORTS

WH



- PART NO. 1CAT61F-WH

- 1-Port CAT6 & 1-Port 3GHZ F-TYPE faceplate
- UL Listed & Compliant with ANSI/TIA-568-C.2
- 110-IDC punch down style for performance and reliability

# FIBER OPTIC SYSTEM

## FIBER OPTIC RACK MOUNT ENCLOSURE



FRONT

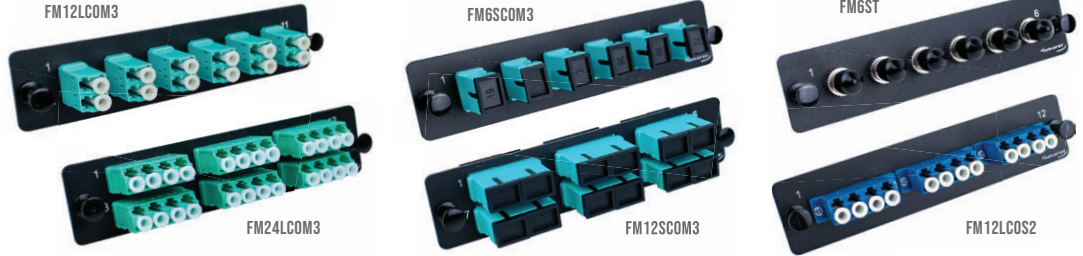
- PART NO. FRM3M1U
- 3-Panel, 1U, 19" X 8.50", w/ Two Splice Trays & Cable Slack Spools

## WALL MOUNT FIBER ENCLASURE



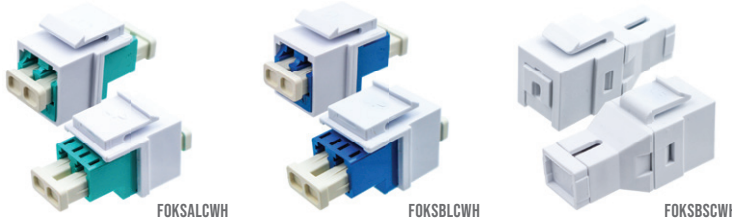
- PART NO. WMFO-4P
- 4-Panel, 2pcs./ splice small trays

## FIBER OPTIC ADAPTER PANELS



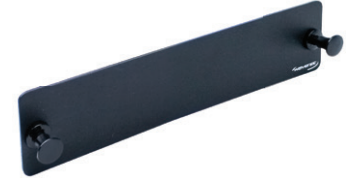
- PART NO. FM12LCOM3 • 12-Port, Duplex, LC, MM, OM3
- PART NO. FM24LCOM3 • 24-Port, Quad, LC, MM, OM3
- PART NO. FM6SCOM3 • 6-Port, Simplex, SC, MM, OM3
- PART NO. FM12SCOM3 • 12-Port, Duplex, SC, MM, OM3
- PART NO. FM6ST • 6-Port, Simplex, ST, MM, OM2
- PART NO. FM12LCS2 • 12-Port, Duplex, LC, SM, OS2

## FIBER OPTIC KEYSTONE STYLE COUPLERS



- PART NO. FOKSALCWH
- LC Duplex, Zirconia Ceramic Sleeve
- OM3, MM, Aqua, LC Adapter
- PART NO. FOKSBLCWH
- LC Duplex, Zirconia Ceramic Sleeve
- OS2, SM, Blue, LC Adapter
- PART NO. FOKSBSCWH
- SC Simplex, Zirconia Ceramic Sleeve
- SM, MM, Aqua, SC Adapter w/ Shutter

## FIBER OPTIC BLANK PLATE



- PART NO. FMBP
- Blank Plate, Black

# PATCH PANELS

## CAT6A 110-TYPE PATCH PANELS



24-PORT

- PART NO. 6APP24
- PART NO. 6APP48
- PoE Type 4 compliance for applications up to 100W
- Meet and exceeds ANSI/TIA-568.2-D, UL Listed
- Foldable cable management bar included w/ each panel

## CAT6 110-TYPE PATCH PANELS



24-PORT

12-PORT

- PART NO. 6EPP12V
- PART NO. 6EPP24
- PART NO. 6EPP48
- 12-Port, T568A/B wiring, Wall mountable w/ 89D bracket
- 1U/24-port, 2U/48-port, 110-TYPE, T568A/B wiring
- Meet and exceeds ANSI/TIA-568-C, UL listed

## CAT5E 110-TYPE PATCH PANELS

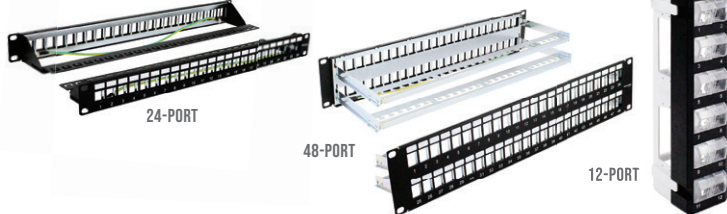


24-PORT

12-PORT

- PART NO. 5EPP12V
- PART NO. 5EPP24
- PART NO. 5EPP48
- 12-Port, T568A/B wiring, Wall mountable w/ 89D bracket
- 1U/24-port, 2U/48-port, 110-TYPE, T568A/B wiring
- Meet and exceeds ANSI/TIA-568-C, UL listed

## BLANK PATCH PANEL



24-PORT

48-PORT

12-PORT

- PART NO. BPPWM-12
- PART NO. BPPWM-24
- PART NO. BPPWM-48
- 12-Port, Wall mount, Compatible with keystone style connectors, Rotatable Modules
- 1U, 24-Port, w/ labeling areas, Compatible with keystone style connectors
- 2U, 48-Port, w/ labeling areas, Compatible with keystone style connectors

## ANGLED BLANK PATCH PANELS



24-PORT

48-PORT

- PART NO. ABP1U-24P
- PART NO. ABP1U-48P
- Angled design saves rack space by routing patch cords directly into vertical cable managers
- Accommodates [1U/24-port, 1U/48-port] keystone style snap-in modular connectors
- Include rear cable management bar for proper cable support

## CAT6A/6/5E SHIELDED FTP PATCH PANELS



- PART NO. BPPWM-24 (24) HD-6AKSJ-FTP
- PART NO. BPPWM-48 (48) HD-6AKSJ-FTP

- PART NO. 6A04UMXX-PC-XX
- PART NO. 6E04UMXX-PC-XX
- PART NO. 5E04UMXX-PC-XX

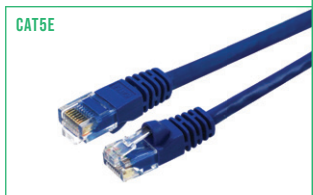
## CAT6A



## CAT6



## CAT5E



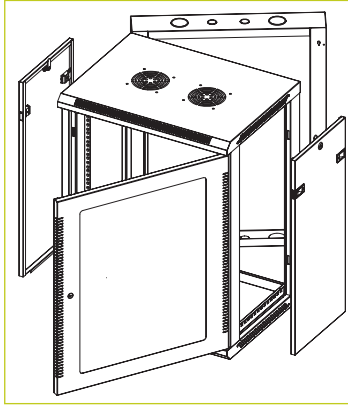
- 100% Copper Wire, EIA/TIA TSB-40A ETL verified, CM-Rated
- CAT6A / CAT6 : LENGTH(XX) 6 inch and rest in feet 1,2,3,5,6,7,10,14,15,20,25,30,35 in blue only, 50,75,100
- CAT5E : LENGTH(XX) 6 inch and rest in feet 1,2,3,5,7,10,14,15,25,35,50,75,100

# CABINETS & RACKS

## 6U / 9U / 12U / 15U / 18U WALL MOUNT CABINETS



9U

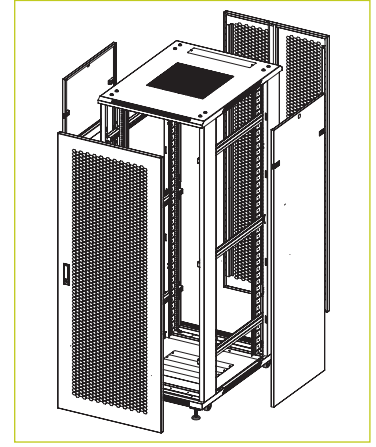


| PART#      | U SIZE | WIDTH | HEIGHT | DEPTH | USABLE DEPTH | LOAD CAPACITY | FAN | RAILS                  |
|------------|--------|-------|--------|-------|--------------|---------------|-----|------------------------|
| CBTF-WM6U  | 6U     | 23.6" | 14.6"  | 23.6" | 18.0"        | 66 LBS.       | 1   | #12-24<br>OR<br>#10-32 |
| CBTF-WM9U  | 9U     | 23.6" | 19.8"  | 23.6" | 18.0"        | 73 LBS.       | 1   |                        |
| CBTF-WM12U | 12U    | 23.6" | 25.0"  | 23.6" | 18.0"        | 79 LBS.       | 1   |                        |
| CBTF-WM15U | 15U    | 23.6" | 30.3"  | 23.6" | 18.0"        | 86 LBS.       | 1   |                        |
| CBTF-WM18U | 18U    | 23.6" | 35.6"  | 23.6" | 18.0"        | 93 LBS.       | 1   |                        |

## 27U / 42U STANDING SERVER CABINETS



42U



| PART#         | U SIZE | WIDTH | HEIGHT | DEPTH | USABLE DEPTH | LOAD CAPACITY | FAN                      | RAILS                    |             |
|---------------|--------|-------|--------|-------|--------------|---------------|--------------------------|--------------------------|-------------|
| CBTF-FL27U-32 | 27U    | 23.6" | 54.4"  | 31.5" | 27.0"        | 1764 LBS.     | 1 TRAY<br>WITH<br>4 FANS | #12-24 STANDARD          |             |
| CBTF-FL42U-32 | 42U    | 23.6" | 80.9"  | 31.5" | 27.0"        | 1764 LBS.     |                          | 1 TRAY<br>WITH<br>4 FANS | M6 CAGE NUT |
| CBTF-FL27U-40 | 27U    | 23.6" | 54.4"  | 39.4" | 35.0"        | 1764 LBS.     |                          |                          |             |
| CBTF-FL42U-40 | 42U    | 23.6" | 80.9"  | 39.4" | 35.0"        | 1764 LBS.     |                          |                          |             |

## 8U / 15U / 30U OPEN FRAME WALL RACKS



8U

15U

30U

| PART#   | U SIZE | DESCRIPTION                            | LOAD CAPACITY |
|---------|--------|--|---------------|
| WMR-8U  | 8U     | 18" DEEP, RMU NUMBER MARKINGS ON RAILS | 110 LBS.      |
| WMR-15U | 15U    | 18" DEEP, RMU NUMBER MARKINGS ON RAILS | 130 LBS.      |
| WMR-30U | 30U    | 18" DEEP, RMU NUMBER MARKINGS ON RAILS | 150 LBS.      |

## 2-POST & 4-POST OPEN FRAME FLOOR RACKS

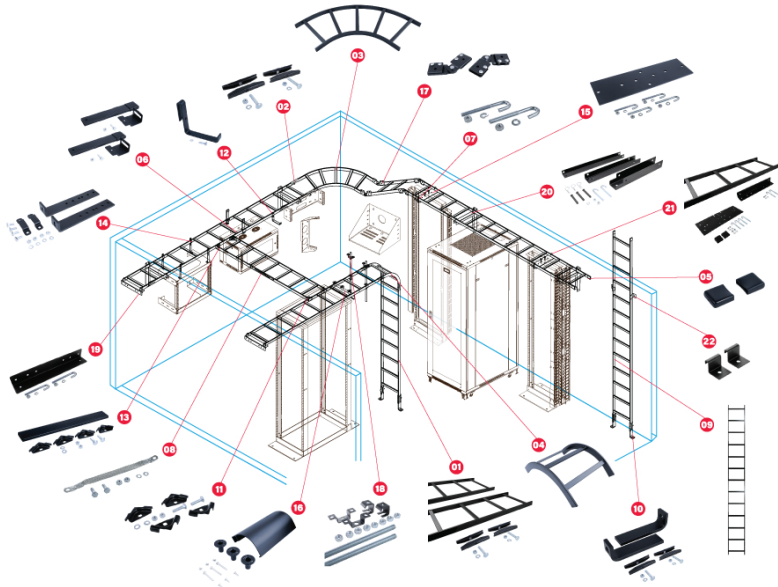


4-POST

2-POST

| PART#     | U SIZE | DESCRIPTION   | LOAD CAPACITY |
|-----------|--------|---|---------------|
| 2POST-45U | 45U    | 7", SPCC/STEEL FRAME, #12-24 THREADED MOUNTING HOLES, NUMBER MARKING ON RAILS   | 1000 LBS.     |
| 4POST-45U | 45U    | 7", STEEL, #12-24 THREADED MOUNTING HOLES, NUMBER MARKING ON RAILS, ADJUSTABLE DEPTH, EIA/ECA-310-E (REVISION OF EIA-310-D) COMPLIANT | 1500 LBS.     |

## LADDER RACK CABLE RUNWAY SYSTEM - SELECTION GUIDE FOR CABLE RUNWAY, CABINETS, CABLE MANAGEMENT, RACKS, BRACKETS AND ACCESSORY SOLUTIONS



| NO. | DESCRIPTION                              | PART#          |
|-----|--|----------------|
| 01  | 5' LADDER RACK RUNWAY W/ BUTT-SPLICE KIT | WL-5SS2PC-KIT  |
| 02  | BUTT-SPLICE KIT                          | WL-BSKTPR-BK   |
| 03  | RADIUS HORIZONTAL BEND LADDER            | WL-FT9012-BK   |
| 04  | UNIVERSAL RADIUS BEND LADDER             | WL-IR9012-BK   |
| 05  | LADDER RACK END CAP                      | WL-LRA2EC-BK   |
| 06  | RETAINING POST KIT                       | WL-LRA06RPK-BK |
| 07  | J-BOLT KIT (5/16")                       | WL-LRA300JK    |
| 08  | GROUNDING STRAP WITH HARDWARE            | WL-LRAGK       |
| 09  | CABLE RUNWAY 10 FOOT                     | WL-LR1210-BK   |
| 10  | FLOOR MOUNT BRACKET                      | WL-RA2FA-BK    |
| 11  | T-JUNCTION BRACKET KIT                   | WL-RA2JT-BK    |
| 12  | L BRACKET - CABLE RUNWAY                 | WL-RA5LB-BK    |
| 13  | LADDER TERMINATION KIT                   | WL-RA12TK-BK   |
| 14  | STAND-OFF ELEVATION KIT 4" - 6"          | WL-RA46SK-BK   |
| 15  | RACK TO RUNWAY PLATE                     | WL-RA123RP-BK  |
| 16  | CABLE RADIUS DROP                        | WL-RASD-BK1    |
| 17  | BUTT SPLICE KIT - SWIVEL/ADJUSTABLE      | WL-RASSK-BK    |
| 18  | CEILING MOUNT KIT 5/8"                   | WL-RATRCK-BK   |
| 19  | WALL ANGLE SUPPORT BRACKET               | WL-WASB12-BK   |
| 20  | TRIANGLE WALL SUPPORT                    | WL-WSB12-BK    |
| 21  | 5' LADDER RACK RUNWAY BRACKET KIT        | WL-R1205-KIT   |
| 22  | VERTICAL WALL BRACKET                    | WL-LRAVWB      |

# SHELVES & CABLE MANAGEMENT

## VERTICAL FINGER DUCT SINGLE-SIDED & DOUBLE-SIDED CABLE MANAGERS



SINGLE-SIDED / 6" DEPTH



DOUBLE-SIDED / 12" DEPTH

- PART NO. VCMC-4678S
- PART NO. VCMC-41278D

- Single sided - 4" X 6" 78", w/ hinged covers
- Double sided - 4" X 12" 78", w/ hinged covers
- Large front and rear openings
- Dual hinged covers

## VERTICAL METAL SINGLE-SIDED & DOUBLE-SIDED CABLE MANAGERS



SINGLE-SIDED / 3" DEPTH



DOUBLE-SIDED / 6" DEPTH

- PART NO. VCNB-3X3X74S
- PART NO. VCNB-3X3X74D

- Easy removable hinged cover(s) provides quick access to cable
- Attached vertically onto front or rear rails 2-Post and 4-Post open frame racks
- Available in single-sided and double-sided and measures 3.6" X 3" / 6" X 74"
- Integrated plastic cable rings for proper cable management

### 10" RACK SHELF VENTED



- PART NO. SHELF-10SSV
- 10" deep single-sided vented, 2U
- 16 gauge steel construction
- 50 lbs weight capacity

### 10" RACK SHELF SOLID



- PART NO. SHELF-10SSS
- 10" deep single-sided solid, 2U
- 16 gauge steel construction
- 50 lbs weight capacity

### 10" DEEP SINGLE-SIDED VENTED (2-PACK)



- PART NO. SHELF-10SSV-S2PK
- 10" deep single-sided vented, 2U, 2-PACK
- 16 gauge steel construction
- 50 lbs weight capacity

### 10" DEEP SINGLE-SIDED SOLID (2-PACK)



- PART NO. SHELF-10SSS-S2PK
- 10" deep single-sided solid, 2U, 2-PACK
- 16 gauge steel construction
- 50 lbs weight capacity

### 15" RACK SHELF VENTED



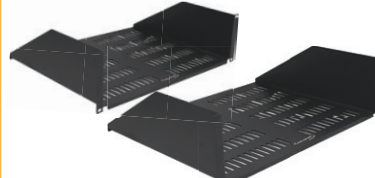
- PART NO. SHELF-15SSV
- PART NO. SHELF-14SV-1U (14" DEPTH, 1U)
- 15" deep single-sided vented, 3U
- 16 gauge steel construction
- 75 lbs weight capacity

### 15" RACK SHELF SOLID



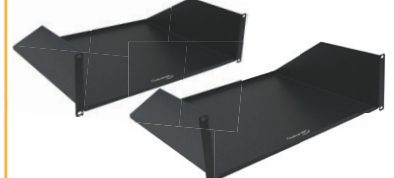
- PART NO. SHELF-15SSS
- PART NO. SHELF-14SS-1U (14" DEPTH, 1U)
- 15" deep single-sided solid, 3U
- 16 gauge steel construction
- 75 lbs weight capacity

### 15" DEEP SINGLE-SIDED VENTED (2-PACK)



- PART NO. SHELF-15SSV-S2PK
- 15" deep single-sided vented, 3U, 2-PACK
- 16 gauge steel construction
- 75 lbs weight capacity

### 15" DEEP SINGLE-SIDED SOLID (2-PACK)



- PART NO. SHELF-15SSS-S2PK
- 15" deep single-sided solid, 3U, 2-PACK
- 16 gauge steel construction
- 75 lbs weight capacity

### 25" RACK SHELF VENTED



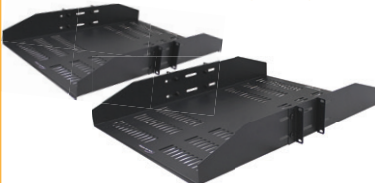
- PART NO. SHELF-25SSV
- 25" deep single-sided vented, 2U
- 16 gauge steel construction
- 100 lbs weight capacity

### 25" RACK SHELF SOLID



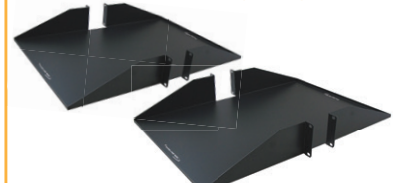
- PART NO. SHELF-25SSS
- 25" deep single-sided solid, 2U
- 16 gauge steel construction
- 110 lbs weight capacity

### 25" DEEP SINGLE-SIDED VENTED (2-PACK)



- PART NO. SHELF-25SSV-S2PK
- 25" deep single-sided vented, 2U, 2-PACK
- 16 gauge steel construction
- 100 lbs weight capacity

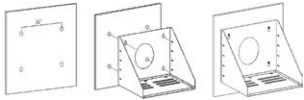
### 25" DEEP SINGLE-SIDED SOLID (2-PACK)



- PART NO. SHELF-25SSS-S2PK
- 25" deep single-sided solid, 2U, 2-PACK
- 16 gauge steel construction
- 110 lbs weight capacity

# SHELVES & CABLE MANAGEMENT

## WALL MOUNT SHELF

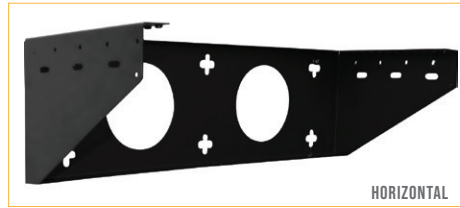


**• PART NO. WMS-18**

- Fully welded and made from 16-gauge steel
- Shelf bottom includes (3) 1" knockout
- Can be used with various equipment within 18" deep by 22" wide
- 140 weight capacity
- Measures: 15.3" H x 22" W x 18.2" Depth



## VERTICAL & HORIZONTAL 4U WALL MOUNT BRACKET



HORIZONTAL



VERTICAL

**• PART NO. VWMB-4U**

- 4U, 19" wide, Vertical & horizontal wall mount bracket
- Up to 150 lbs. load capacity
- Includes mounting hardware

## HIGH-DENSITY SINGLE-SIDED HORIZONTAL CABLE MANAGERS



**• PART NO. MDH-1U**  
**• PART NO. MDH-2U**  
**• PART NO. MDH-3U**

- Large slotted fingers design for high volume patch cords
- Cover comes with (4) hinges can be opened from top or bottom
- Rear openings for cable pass-through
- Measures 19" standard EIA width with 4.5" deep

## WALL MOUNT HINGED BRACKETS



**• PART NO. WMHB-1U**  
**• PART NO. WMHB-2U**  
**• PART NO. WMHB-3U**  
**• PART NO. WMHB-4U**

- 19" wide, 6" depth, Single-sided hinged
- Integrates with cable ties points
- Ideal for space restrictions area

## FINGER DUCT PLASTIC HORIZONTAL CABLE MANAGERS



**• PART NO. PDH-SS-1U**  
**• PART NO. PDH-SS-2U**  
**• PART NO. PDH-DS-1U**  
**• PART NO. PDH-DS-2U**

- Single-sided, w/ cover, 1U/2U
- Large front finger openings
- Slide-on covers

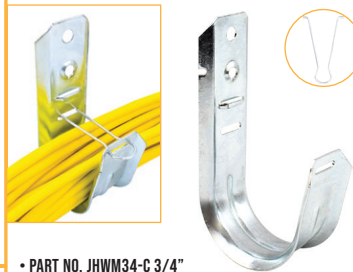
## HORIZONTAL SINGLE SIDED METAL CABLE MANAGERS (MADE IN USA)



**• PART NO. HCM1901-4**  
**• PART NO. HCM1902-4**

- Single-sided, 1U / 2U
- 4 / 5 horizontal rings for patch cords management
- Used with cabinets, brackets and racks
- Secure all types of low-voltage cables
- Large rings ideal for small to large cable bundles

## WALL MOUNT STYLE (25-PACK)



**• PART NO. JHWM34-C 3/4"**  
**• PART NO. JHWM13-C 1 5/16"**  
**• PART NO. JHWM02-C 2"**  
**• PART NO. JHWM04-C 4"**

- Supports low-voltage cables
- Wall mount applications

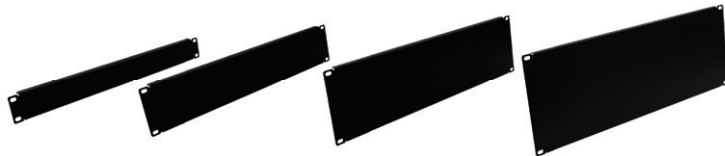
## MULTI-FUNCTION "BATWING" STYLE (25-PACK)



**• PART NO. JHMF34-C 3/4"**  
**• PART NO. JHMF13-C 1 5/16"**  
**• PART NO. JHMF02-C 2"**

- Supports low-voltage cables
- Attaches to threaded rod or drop wire

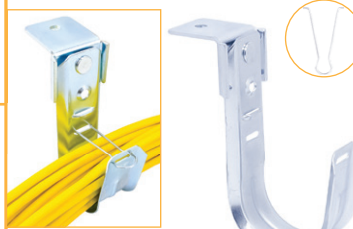
## 19" WIDE BLANK PANELS (5-PACK)



**• PART NO. BP-1U-5N**  
**• PART NO. BP-2U-5N**  
**• PART NO. BP-3U-5N**  
**• PART NO. BP-4U-5N**

- 19" wide blank racks, cabinets & brackets panels
- Conceals Rack Mount Spaces (RMS) in racks, cabinets and brackets
- Improves aesthetic and appearance
- Available in 1U, 2U, 3U & 4U

## CEILING MOUNT STYLE (25-PACK)



**• PART NO. JHCM34-C 3/4"**  
**• PART NO. JHCM13-C 1 5/16"**  
**• PART NO. JHCM02-C 2"**  
**• PART NO. JHCM04-C 4"**

- Supports low-voltage cables
- Designed for ceiling mount or flat surface applications

## HAMMER-ON STYLE (25-PACK)



**• PART NO. JHOM02-C**  
• CBM, 2", Fits 1/8" TO 1/4" Beam, W/Retainer Clip

- PART NO. JHOM-CLIP**  
• Bottom Mount, Fits 1/8" TO 1/4" Flange Thickness

## REAR CABLE MANAGEMENT SUPPORT BARS (5-PACK)



**• PART NO. RCMSB5PK**

- 19" wide
- 5" depth rear cable management support bar
- 5-PACK

## CABLE MANAGEMENT DISTRIBUTION D-RINGS (50-PACK)



- PART NO. DR200**  
**• PART NO. DR300**  
**• PART NO. DR500**
- Metal distribution D-ring, 50-PACK
  - Organizing cables in various angles
  - Indoor/outdoor applications
  - Available in 2", 3" and 5" diameters

## BEAM CLAMP (100-PACK)



**• PART NO. BCSS**

- Installation on beam flanges
- Hooks bridle rings & J-hooks
- Indoor/outdoor applications

## BRIDLE RINGS (100-PACK)



**• PART NO. BR100**  
**• PART NO. BR150**

- 100-PACK
- Bridle ring w/thread, 1" Diameter, #10-24 metal screw
- Bridle ring w/thread, 1 1/2" Diameter, 1/4" metal screw

# RESIDENTIAL STRUCTURED WIRING ENCLOSURES

## 14" HOME MEDIA ENCLOSURE WITH HINGED DOOR (METAL)



- PART NO. WHWS1403
- 14" Enclosure with hinged door and screw-on option
- Wood studs or surface mountable
- Dimensions: 14" H x 14.25" W x 3.66" D
- UL Listed

## 18" HOME MEDIA ENCLOSURE WITH HINGED DOOR (METAL)



- PART NO. WHWS1803
- 18" Enclosure with hinged door and screw-on option
- Wood studs or surface mountable
- Dimensions: 18" H x 14.25" W x 3.66" D
- UL Listed

## 28" HOME MEDIA ENCLOSURE WITH HINGED DOOR (METAL)



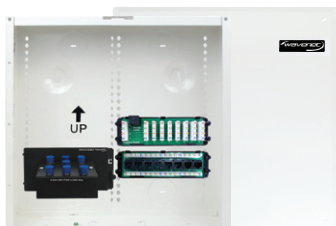
- PART NO. WHWS2803
- 28" Enclosure with hinged door and screw-on option
- Wood studs or surface mountable
- Dimensions: 28" H x 14.25" W x 3.66" D
- UL Listed

## 42" HOME MEDIA ENCLOSURE WITH HINGED DOOR (METAL)



- PART NO. WHWS4203
- 42" Enclosure with hinged door and screw-on option
- Wood studs or surface mountable
- Dimensions: 42" H x 14.25" W x 3.66" D
- UL Listed

## 14" HOME MEDIA ENCLOSURE KIT WITH HINGED DOOR (METAL)



- PART NO. WHWS1402K
- INCL 8-Port, CAT6 data, 8 Port voice & 6-Port 2GHz video splitter modules
- Mounts between wood studs or surface mountable
- UL Listed

## 18" HOME MEDIA ENCLOSURE KIT WITH HINGED DOOR (METAL)



- PART NO. WHWS1802K
- INCL 8-Port, CAT6 data, 8 Port voice & 6-Port 2GHz video splitter modules
- Mounts between wood studs or surface mountable
- UL Listed

## 28" HOME MEDIA ENCLOSURE KIT WITH HINGED DOOR (METAL)



- PART NO. WHWS2802K
- INCL 8-Port, CAT6 data, 8 Port voice & 6-Port 2GHz video splitter modules
- Mounts between wood studs or surface mountable
- UL Listed

## 2GHZ 8-PORT PASSIVE VIDEO SPLITTER WITH METAL BRACKET



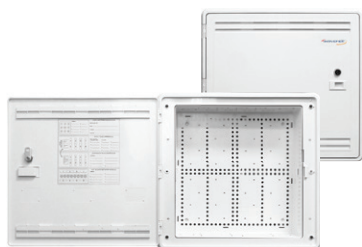
- PART NO. WHWS10081
- 2GHz, 1 Input x 8 Output
- Fits Wavenet's structured wiring enclosures

## 2GHZ 6-PORT PASSIVE VIDEO SPLITTER WITH METAL BRACKET



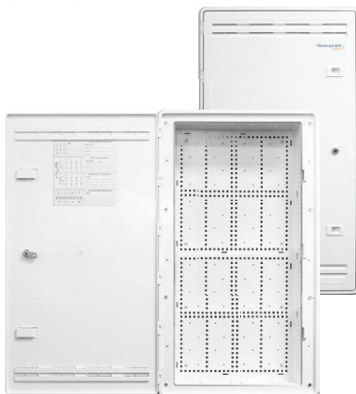
- PART NO. WHWS1006
- 2GHz, 1 Input x 6 Output
- Fits Wavenet's structured wiring enclosures

## 15" ENCLOSURE WITH TRIM RING HINGED DOOR (PLASTIC)



- PART NO. WHWS15AEP (SINGLE PACK)
- PART NO. WHWS15-HD6PK (6-PACK, W/HINGED DOOR)
- PART NO. WHWS15-ENGPK (6-PACK)
- Wi-Fi friendly and eliminates interferences
- Dimensions: 15" H x 14.42" W x 3.42" D
- UL Listed

## 30" ENCLOSURE WITH TRIM RING HINGED DOOR (PLASTIC)



- PART NO. WHWS30AEP (SINGLE PACK)
- PART NO. WHWS30-HD6PK (6-PACK, W/HINGED DOOR)
- PART NO. WHWS30-ENGPK (6-PACK)
- Wi-Fi friendly and eliminates interferences
- Dimensions: 30" H x 14.42" W x 3.42" D
- UL Listed

## 8-PORT CAT6 110-TYPE IDC DATA MODULE WITH PLASTIC PLATE



- PART NO. WHPP100805
- Supports up to 8 data connections
- Fits Wavenet's structured wiring enclosures

## 8-PORT 110-TYPE IDC VOICE MODULE WITH RJ-31X, PLASTIC PLATE



- PART NO. WHBG100806
- Supports up to 8 voice connections w/RJ31X
- Fits Wavenet's structured wiring enclosures

## 8-PORT BLANK PANEL



- PART NO. WPK10080
- Multiple media applications
- Configurable with keystone modular connectors
- Fits Wavenet's structured wiring enclosures

## VOICE/DATA/VIDEO MODULE KIT



- PART NO. VDVM-8D8P6V
- (1) 8-Ports CAT6 Data, (1) 8-Ports Phone with RJ31X & (1) 6-Ports 2GHz splitter
- UL Listed and compliant with ANSI/TIA-568 standards for residential use

# TOOLS & ACCESSORIES

## RJ45-EZPASS® CAT5E UTP MODULAR PLUGS [100-PACK]

- PART NO. CAT5ERJ45-EZPASS
- For use with 24-26 AWG CAT5E Unshielded UTP solid and stranded cables
- High-Performance 3 Prongs Brass 8P8C and 50um gold-plated contacts
- Conductors trimmed to the correct length by the tool – no measuring



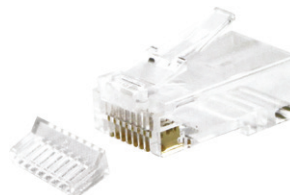
## RJ-45 CAT5E MODULAR PLUGS

- PART NO. RJ45-CAT5UTP-100PK
- 100-PACK, No loading bar
- Accepts 24-23 AWG solid or stranded UTP cables



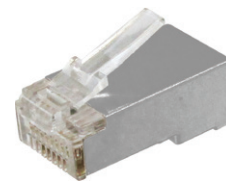
## RJ-45 CAT5E MODULAR PLUGS

- PART NO. RJ45-CAT5UTP50U-100PK
- 100-PACK, CAT6 RJ45 plug w/ loading bar
- 50 micron gold contacts



## RJ-45 CAT5E SHIELDED MODULAR PLUG

- PART NO. RJ45-CAT5FTP-100PK
- RJ-45, CAT5E, Shielded modular plugs



## RJ45-EZPASS® CAT6 UTP MODULAR PLUGS [100-PACK]

- PART NO. CAT6RJ45-EZPASS
- For use with 23-26 AWG CAT6 Unshielded UTP solid and stranded cables
- High-Performance 3 Prongs Brass 8P8C and 50um gold-plated contacts
- Conductors trimmed to the correct length by the tool – no measuring



## RJ-45 CAT6 MODULAR PLUGS

- PART NO. RJ45-CAT6UTP-100PK
- Modular plugs, No loading bar
- 100-PACK



## RJ-45 CAT6 MODULAR PLUGS

- PART NO. RJ45-CAT6UTP50U-100PK
- 50 micron gold contacts
- 100-PACK, CAT6 RJ45 plug w/ loading bar
- Staggered closing reduces NEXT



## RJ-45 CAT6 SHIELDED MODULAR PLUG

- PART NO. RJ45-CAT6FTP
- RJ-45, CAT6 shielded, Modular plugs
- Loading bar included



## RG-6 COMPRESSION F-TYPE [50-PACK]

- PART NO. F-RG6U-50PK
- F-TYPE connectors for RG-6 coaxial cables



## RJ-45 CAT6A SHIELDED MODULAR PLUGS [50U, 50-PACK]

- PART NO. RJ45-CAT6AFTP-50PK
- RJ-45, CAT6A shielded, Modular plugs
- Loading bar included



## JACK4PAIR® KEYSTONE TOOL

- PART NO. TOOL-JACK4PR
- JACK4PAIR®, 4-Pair termination tool for keystone jacks



## JACK4PAIR®, REPLACEMENT CUT MODULE & BASE

- PART NO. JRH90180-4PR-KSJ
- Replacement Cut Module & Base for SDJ & HDJ Keystone Jacks for JACK4PAIR®



## PUNCH DOWN TOOL

- PART NO. TOOLPD-11066
- 110 & 66 punch down tool



## MOD PLUG CRIMP TOOL

- PART NO. TOOL-CMBST
- 8P, 6P, 4P modular plug crimping tool



## UNIVERSAL COMPRESSION TOOL

- PART NO. TOOLCOM
- Universal compression tool for F-TYPE, BNC & RCA connectors



## HANDHELD UNIVERSAL KEYSTONE JACKS TERMINATION AID

- PART NO. TOOLKSJ-HLDR
- Universal keystone jacks termination tool



## COMBO STRIPPER TOOL

- PART NO. TOOL-CCS
- UTP & Coax combo stripper tool



## WIRE CUTTER AND STRIPPER

- PART NO. T5021
- Wire cutter and stripper tool



## RJ45-EZPASS® PASS-THROUGH CRIMPING TOOL

- PART NO. TOOL-EZPASS
- RJ45-EZPASS® Crimp Tool, Pass-Through Crimper, Cutter for CAT6 & CAT5E 8P8C Modular plugs



## 4-PAIR PUNCH DOWN TOOL

- PART NO. T1104PR-PP
- 110 Punch Down, 4-Pair tool for patch panels



## REPLACEMENT BLADE

- PART NO. TA110-RB
- Replacement blade for 110 Punch down tool



## PDU

- PART NO. PDU1012M-24
- Outlet Quantity: 2 Front / 10 Rear
- Maximum Current (amps): 15A
- Single Phase AC W/6.5 FT. power cord
- 1U



|   |  |   |
|---|--|---|
| <p><b>CALIFORNIA CORPORATE WAREHOUSE</b><br/>Carson, CA 90745</p> | <p><b>TEXAS WAREHOUSE</b><br/>The Colony, TX 75056</p> | <p><b>NEW JERSEY WAREHOUSE</b><br/>Ridgefield, NJ 07657</p> |
| <p><b>TOLL FREE. 888.492.8363</b></p>                             |  |   |

