

# MDF-TO-IDF SOLUTIONS

WALL MOUNT AND STANDING SERVER CABINETS



## WC SERIES™ CABINETS

6U, 9U, 12U, 15U AND 18U OPTIONS

---

The Wavenet [WC Series™](#) Double Section Swing Out Cabinets are ideal for intermediate distribution frame (IDF) locations, including server rooms, audio/video/security applications, manufacturing areas, warehouses, where remote networking equipment needs to be securely stored and protected

# WC Series™ Cabinets Specifications

## Front View Features



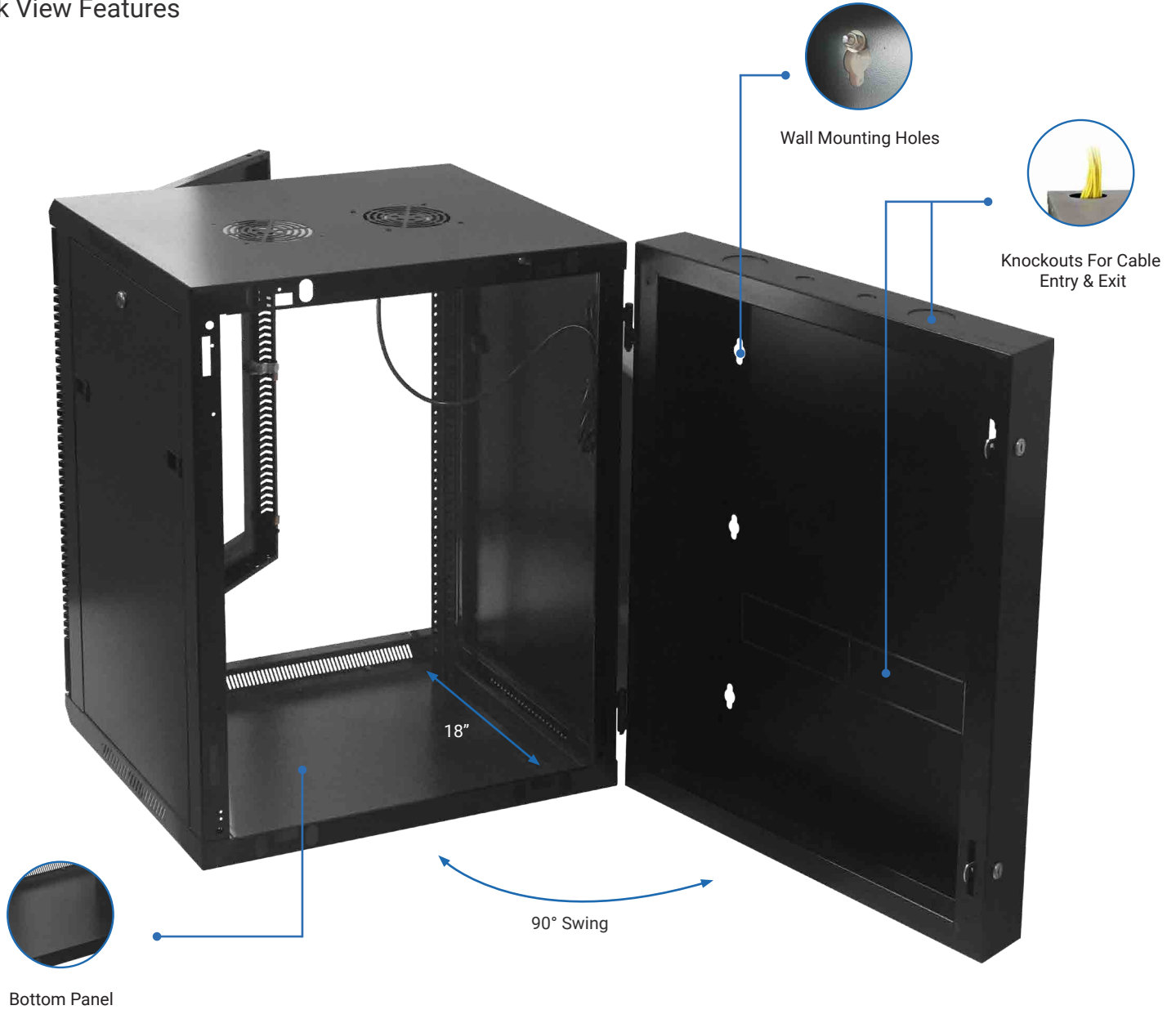
## KEY FEATURES

- » Cable entry & exit on top/bottom knockouts
- » Lockable front, rear door & side panels
- » Reversible front door for right or left-handed use
- » Integrated grounding point for maximum protection
- » Number markings on rails with adjustable depth
- » Tempered glass shatter resistance door
- » (1) 50CFM fan with one extra empty slot for additional fan
- » 24" Depth with 18" usable, (2 sets) of 16" on center mount
- » Ship fully assembled to save time



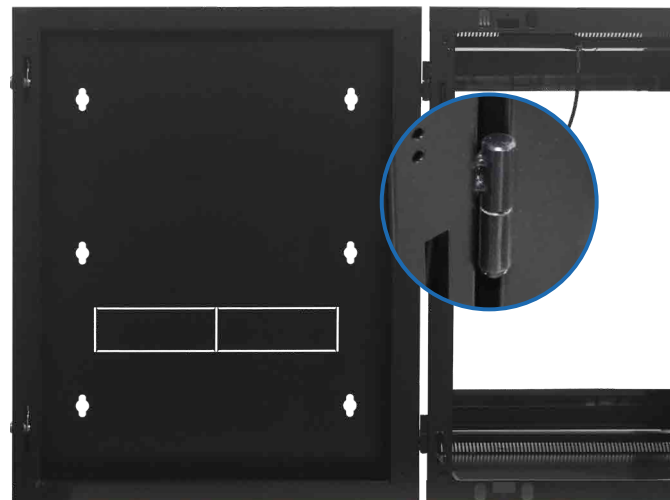
# WC Series™ Cabinets Specifications

## Back View Features



## Easy Access Front to Back

Our WC Series™ Cabinets feature a versatile swing door design with welded hinges that enables up to 90° Swing Out, ensuring effortless for rear access to equipment and streamlined cable management. With a usable depth of 18", these cabinets can accommodate most standard equipments while providing ample space for efficient network organization



# WC Series™ Cabinets Sizes

6U/9U/12U/15U and 18U Variations



## 6U CABINET

### CBTF-WM6U

- » Secure storage solutions for ICT equipments
- » Suitable for small-to-medium-sized network applications
- » Easy to install, secure and convenient access
- » Load up to 70 lbs.

Width	Height	Depth	Usuable Depth	Load Capacity	Rails #
23.6"	14.6"	23.6"	18"	70 lbs.	#12-24 or #10-32



## 9U CABINET

### CBTF-WM9U

- » Secure storage solutions for ICT equipments
- » Suitable for small-to-medium-sized network applications
- » Easy to install, secure and convenient access
- » Load up to 75 lbs.

Width	Height	Depth	Usuable Depth	Load Capacity	Rails #
23.6"	19.8"	23.6"	18"	75 lbs.	#12-24 or #10-32



## 12U CABINET

### CBTF-WM12U

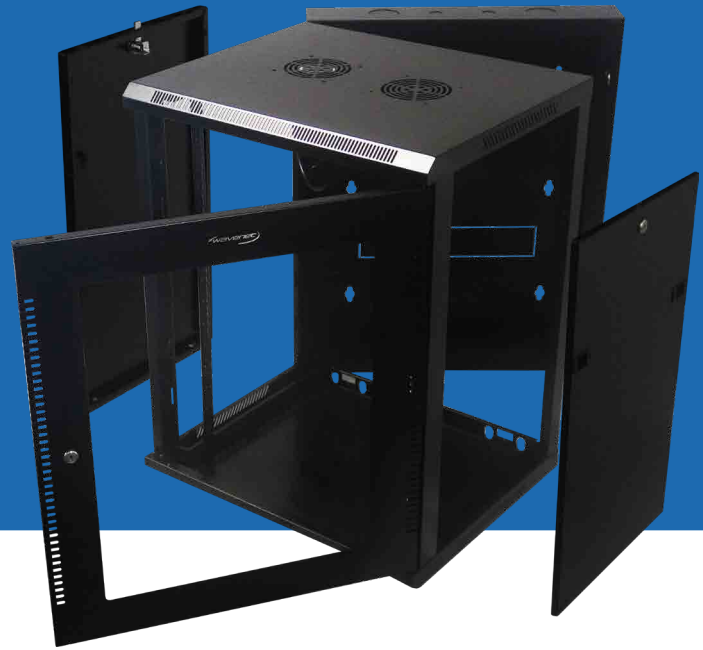
- » Secure storage solutions for ICT equipments
- » Suitable for small-to-medium-sized network applications
- » Easy to install, secure and convenient access
- » Load up to 80 lbs.

Width	Height	Depth	Usuable Depth	Load Capacity	Rails #
23.6"	25.0"	23.6"	18"	80 lbs.	#12-24 or #10-32

**SUITABLE** for network closets, classrooms, and other remote locations

**FULL COMPLIANCE** with ANSI/EIA/IEC standard network requirements

**COST-EFFECTIVE** solution compared to floor-standing racks or server cabinets



## 15U CABINET

### CBTF-WM15U

- » Secure storage solutions for ICT equipments
- » Suitable for small-to-medium-sized network applications
- » Easy to install, secure and convenient access
- » Load up to 90 lbs.

Width	Height	Depth	Usable Depth	Load Capacity	Rails #
23.6"	30.3"	23.6"	18"	90 lbs.	#12-24 or #10-32



## 18U CABINET

### CBTF-WM18U

- » Secure storage solutions for ICT equipments
- » Suitable for small-to-medium-sized network applications
- » Easy to install, secure and convenient access
- » Load up to 100 lbs.

Width	Height	Depth	Usable Depth	Load Capacity	Rails #
23.6"	35.6"	23.6"	18"	100 lbs.	#12-24 or #10-32

# Applications for Network Configurations

## WC-Series™ Cabinet Installation Display

The WC Series™ Cabinets are fully compatible with consolidating low-voltage wiring solutions, suitable for IDA/IDF locations where floor space is limited



Data



Internet



Video



Cable



PoE



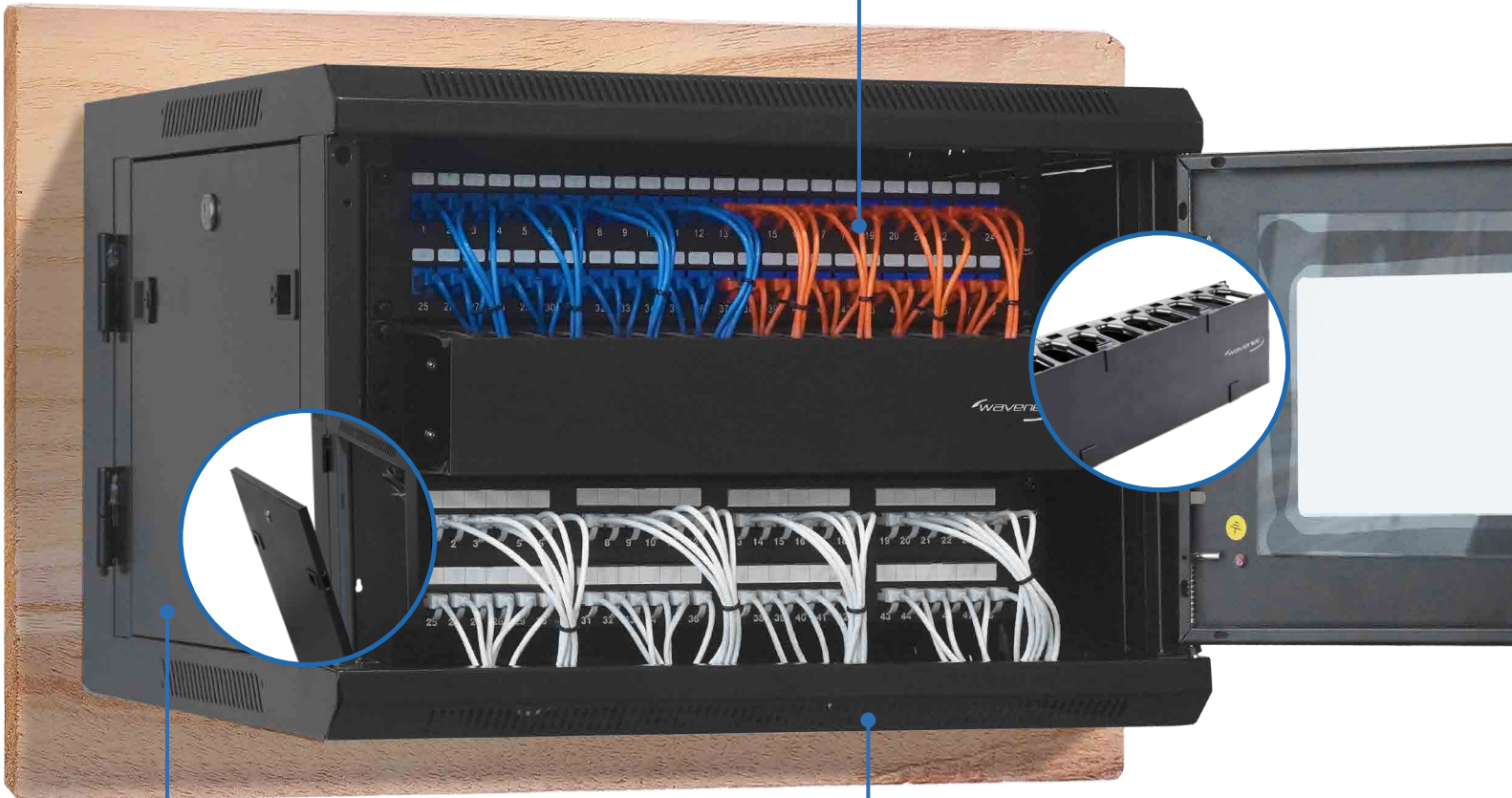
#12-24 Rails



#10-32 Rails

### MOUNTING RAIL OPTIONS

- » Each cabinet comes with 2 internal adjustable rails (#10-32 or #12-24) for depth management depending on your project installation requirements



### REMOVABLE SIDE PANELS

- » Side panels can be easily detached from the cabinet, allow easy access to equipments from the left and right side

### ROBUST VENTILATIONS

- » The cabinet features a ventilation system with multiple airflow patterns, ensuring optimal air circulation

# WC Series™ Cabinets Packaging

Standard Packaging and Securement



## Durable & Reliable Protection

The WC Series™ Cabinets are packaged in a heavy-duty box, protecting against external damage to ensure product quality. The packaging features an easy slide-up method, eliminating the need for cutting and reducing messy work-space, saving both time and effort



Keys (4pcs)



Rubber Rings (8pcs)



Anchor Screws (4pcs)



#10-32 or #12-24 Screws

\*Quantity varies based on sizes

# MDF-TO-IDF SOLUTIONS

WALL MOUNT AND STANDING SERVER CABINETS



## FC SERIES™ CABINETS

27U & 42U WITH 32" & 40" DEPTH OPTIONS

---

The Wavenet [FC Series™](#) Series Standing Network Server Cabinets are ideal for Intermediate Distribution Frame (IDF) and Main Distribution Frame (MDF) locations, such as telecommunications rooms designed for large wiring closets. These cabinets provide secure and organized storage for networking equipments



# FC Series™ Cabinets Specifications

Front View with Single Swing Out Door



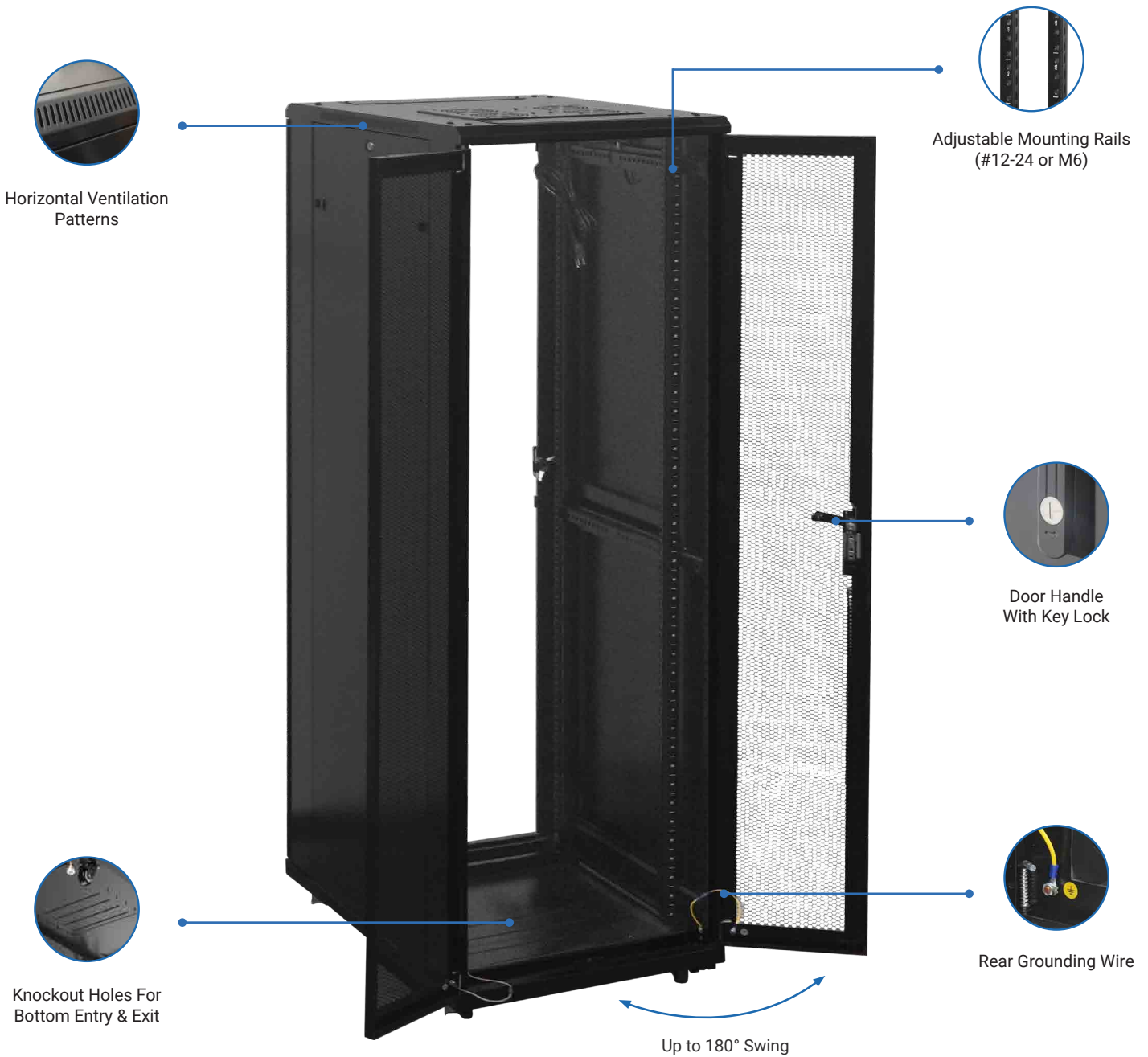
## INDEPTH FEATURES

- » Lockable front, rear door & side panels
- » 32" deep (usable 27") & 40" deep (usable 35")
- » 1764 lbs. load capacity when properly secured
- » Number markings on rails with adjustable depth
- » Perforated reversible front door and split rear doors
- » Pre-installed one tray of (4) 50CFM fans
- » Pre-installed casters with 4 leveling feet
- » 2 sets of rails #12-24 or M6 cage nut threaded holes



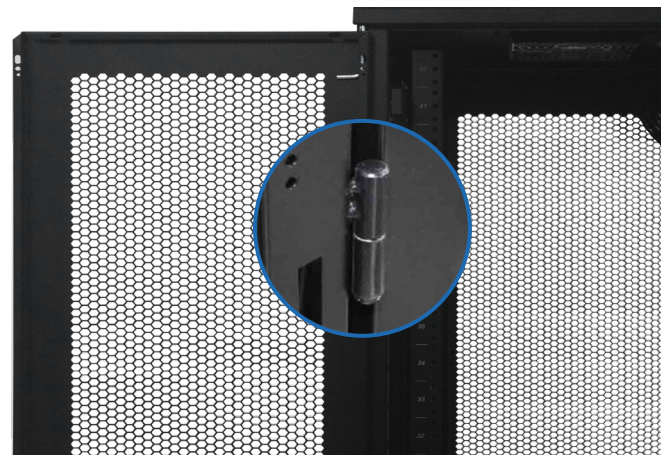
# FC Series™ Cabinets Specifications

Back View with Split Doors



## The Center For Data Distribution

The perforated front and rear doors design enhances airflow for optimal ventilation. Removable side panels provide easy access, while the extra depth simplifies cable management. The removable front and rear doors, constructed with welded hinges, ensure durability and flexibility during installation



# FC Series™ Cabinets Sizes

27U and 42U Variations



## 27U CABINET

### CBTF-WM6U

- » Complies with MDA/MDF network requirements
- » Ideal for data centers, co-locations, and other applications
- » Commercial grade ideal for large range of equipment mounting
- » Static load capacity up to 1764 lbs.

Width	Height	Depth	Usuable Depth	Load Capacity	Rails #
23.6"	54.4"	31.5"	27"	1764 lbs.	#12-24 or M6 Nut
23.6"	54.4"	39.4"	35"	1764 lbs.	#12-24 or M6 Nut



## 42U CABINET

### CBTF-WM6U

- » Complies with MDA/MDF network requirements
- » Ideal for data centers, co-locations, and other applications
- » Commercial grade ideal for large range of equipment mounting
- » Static load capacity up to 1764 lbs.

Width	Height	Depth	Usuable Depth	Load Capacity	Rails #
23.6"	80.9"	31.5"	27"	1764 lbs.	#12-24 or M6 Nut
23.6"	80.9"	39.4"	35"	1764 lbs.	#12-24 or M6 Nut

# Applications for Network Configurations

## FC-Series™ Cabinet Installation Display

The FC Series™ Cabinets are fully compatible with consolidating low-voltage wiring solutions, ideal for small to large offices where floor space is limited



Data



Internet



Video



Cable



PoE

### WELDED HEAVY-DUTY FRAME

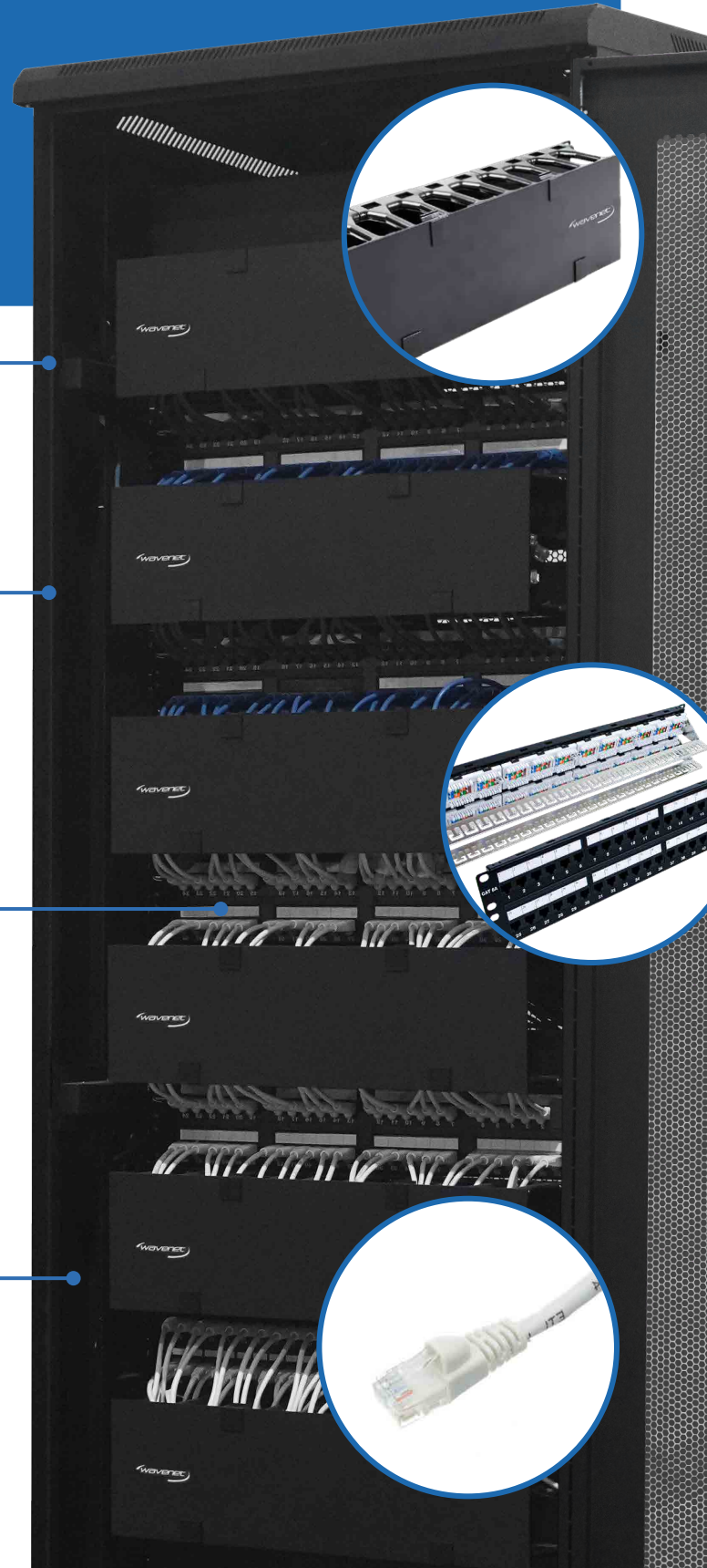
- » The unit is constructed from heavy-duty cold-rolled steel with a black powder-coated finish, ensuring exceptional durability and the strength to support high-density builds

### HIGH-DENSITY APPLICATIONS

- » Ideal for high-density network applications, compatible with all standard 19" equipment, including servers, patch panels, PDUs, and more, ensuring seamless integration and versatility

### ADJUSTABLE MOUNTING RAIL

- » Feature #12-24 or M6 cage nut threaded holes with number markings, adjustable depth for an easy and flexible installation that meets your project requirements



# FC Series™ Cabinets Packaging

Standard Packaging and Securement



## Safe, Secure and Compact

The FC Series™ Cabinet comes fully assembled, including pre-installed casters, eliminating the need for installation upon arrival. Securely wrapped on all sides and strategically positioned within the packaging to prevent damage and movement during transit



Keys (4pcs)

Adjustable Feet ( 4pcs)

Grounding Wire (2pcs)

#12-24 or M6 Cage Nuts

*\*Quantity varies based on sizes*