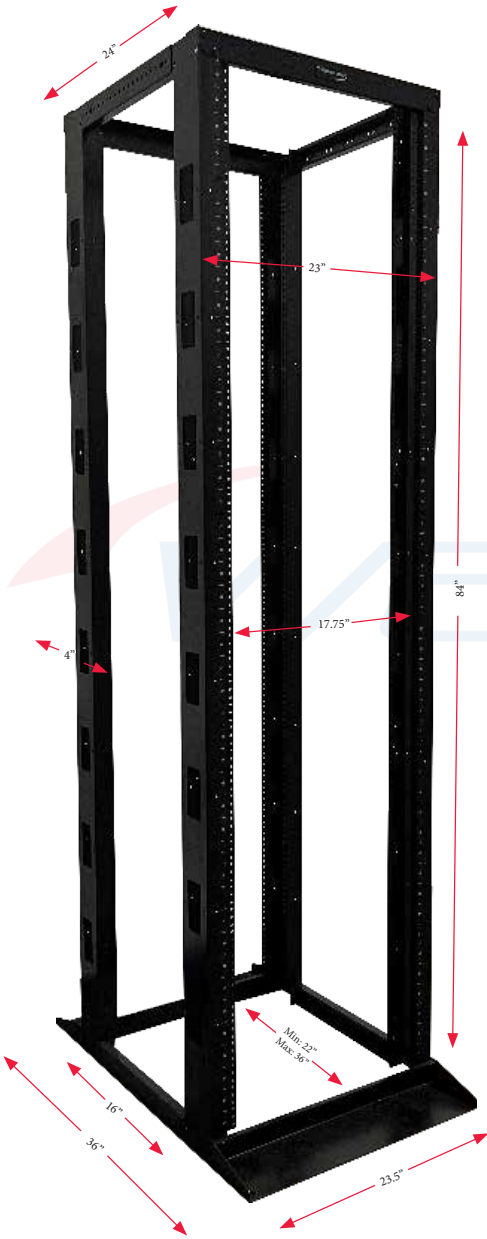


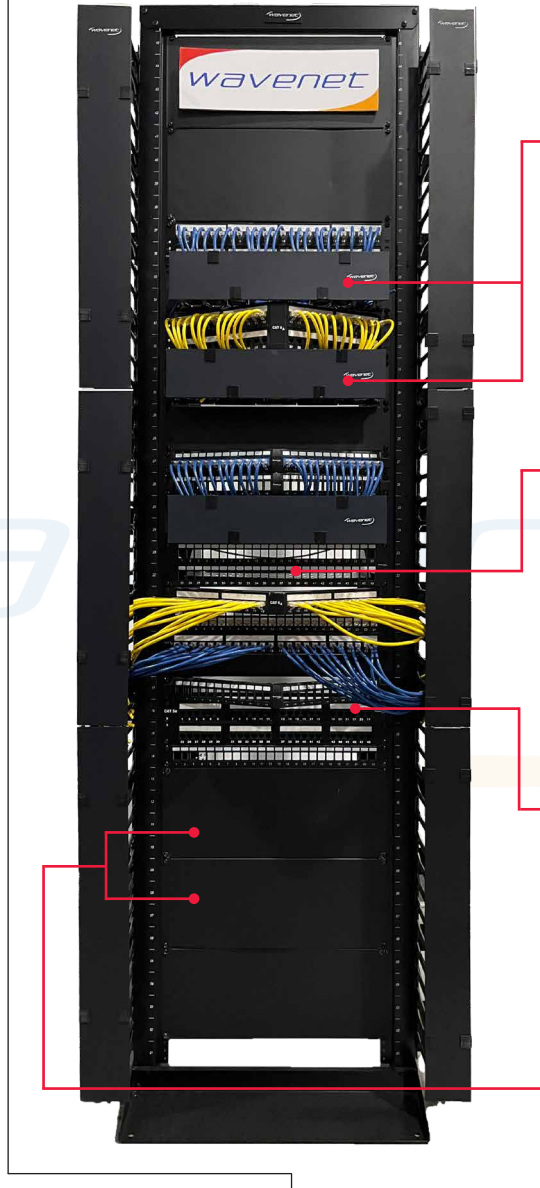
# 4-POST 45U RACK



## BEFORE



## AFTER

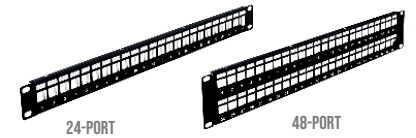


## RELATED PRODUCT



### HIGH-DENSITY SINGLE-SIDED HORIZONTAL CABLE MANAGERS

- PART NO. MDH-1U
- PART NO. MDH-2U
- PART NO. MDH-3U



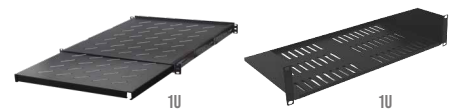
### BLANK PATCH PANELS

- PART NO. BPPWM-24
- PART NO. BPPWM-48



### CAT6A 110-TYPE PATCH PANELS

- PART NO. 6APP24
- PART NO. 6A PP48



### ADJUSTABLE SHELF & 14" VENTED SHELF

- PART NO. SHELF-4POST-1U
- PART NO. SHELF-14SSV-1U

## PRODUCT SPECIFICATIONS

Part No.	H"	W"	Useable Adj. Depth	Overall Depth	RMU	Color	Weight	Material	Load Capacity
4POST-45U	84"	23"	Min: 24" Max: 36"	36"	#12-24/45U	BLK	58LB	SPCC/Steel Frame	1500 LBS

\*COMPLIANCE: ANSI/EIA RS310D



**CALIFORNIA CORPORATE WAREHOUSE**  
Carson, CA 90745

**TEXAS WAREHOUSE**  
The Colony, TX 75056

**NEW JERSEY WAREHOUSE**  
Ridgefield, NJ 07657

TOLL FREE. 888.492.8363  
2023 Wavenet, Incorporated. All rights reserved.

